



turbocut

BLITZ-KERNER

Cattle stunning apparatus

Calibre 9x17 mm, turbocut Jopp cartridges
registered type approval number PTB 3-69

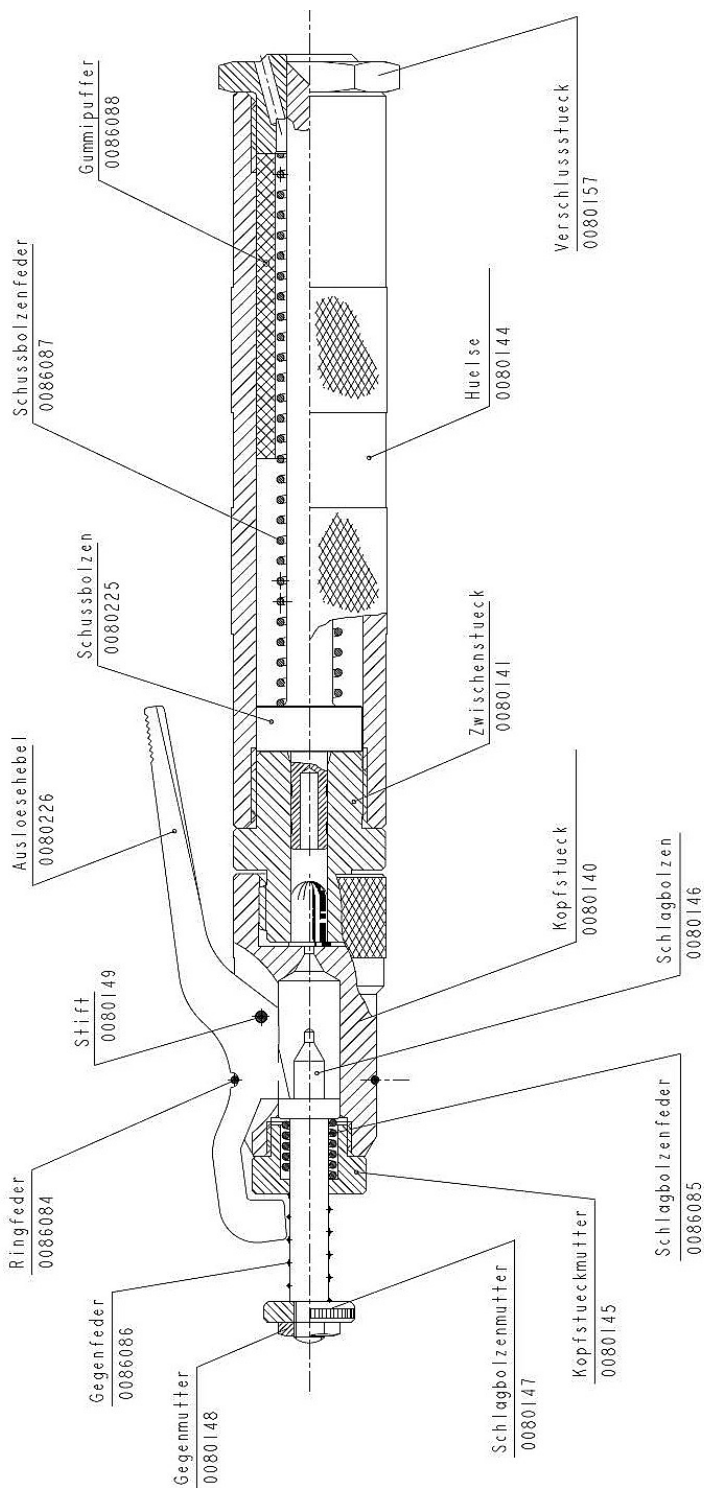


with CE conformity mark



Favorable price for: apparatus * cartridges* spare parts
Long life expectancy * simple handling

Schussapparat / Cattle Stunning Apparatus / L'Appareil d'Abattage



Stunning Apparatus Blitz Kerner



It is imperative that you read this Instruction Manual thoroughly **before** initial use. Ensure that this Instruction Manual is **always** stored together with the apparatus. You may only turn this apparatus over to another person together with this Instruction Manual.

Blitz Kerner Components

Art. No.	Component
80148	Conter nut
80147	Striking pin nut
86086	Exterior striking pin
80145	Head piece nut
86085	Striking pin spring
86084	Annular spring
80146	Striking pin
80140	Head piece
80149	Trigger handle
80226	Trigger
80141	Intermediate piece
80225	Bolt
86087	Bolt spring
80144	Shaft
86088	Rubber buffer
80157	Lock

Table of Contents

1. General Notes
2. Product Description
3. Cartridges
4. Accessories and Wear Parts
5. Technical Data
6. General Safety Instructions
7. Initial Use
8. Using the Apparatus
9. Care and Maintenance
10. Troubleshooting
11. Official Safety Regulations
12. Periodic Inspection
13. Waste Disposal
14. Manufacturer's Warranty Blitz Kerner
15. EC Declaration of Conformity
16. Certificate of Purchase

1. General Notes

Signal Words and their Meaning

DANGER: For a potentially dangerous situation, which could result in serious injuries or death.

CAUTION: For a potentially dangerous situation, which could lead to light injuries or property damage.

1.1 Pictograms

			
Danger	Hot surface	Ear Protection	Adhere to the Instruction Manual

The "apparatus/device" designated in the text of this Instruction Manual, is invariably and exclusively the stunning apparatus Blitz Kerner PTB 3-69.

1.2 Location of identification details on the apparatus.

Head piece: manufacturer, year of production, serial number, PTB 3-69 shaft: serial number, product name, manufacturer, type of ammunition.

1.3 Transcribe the following information into your Instruction Manual, and **always** use this information in reference to any questions you should have, or when submitting the apparatus for its periodic inspection:

Year of manufacture:

Serial Number:

2. Product Description

The Blitz Kerner stunning apparatus may only be exclusively used to stun slaughter animals. The user must adhere to the EC Animal Health and Welfare Directive and the regulations valid in their country.

The apparatus is subject to the Directive 2006/42/EG (Machinery Directive) Appendix 1, Point 2.2.2 "**Portable fixing and other impact machinery.**"

After the projectile load is ignited in the cartridge chamber (centerfire), the bolt is accelerated, exits the shaft at a defined length, is drawn back into the housing and remains in the apparatus.

Centerfire cartridges, caliber 9x17, are exclusively used as cartridges. To be safely used in this apparatus, the cartridges **must** meet the requirements of the respective C.I.P (International Proof Commission) type approval tests. For optimum results, we recommend using cartridges from turbocut or products of equivalent quality.

How the Stunning Apparatus Functions

The energy of the cartridge is conveyed to the bolt and accelerates it in such a manner that it is driven through the cranium, penetrating the animal's brain. The bolt's speed is braked to zero and drawn back into the apparatus via the integrated bolt spring and rubber buffer. To achieve both optimum effect and spare the apparatus, the cartridge energy (-> refer to cartridges) is adapted to the animal.

3. Cartridges, power device

The apparatus has been specially configured for centerfire cartridges (special closed and waterproof-sealed, caliber 9x17) – only these cartridges may be used. The cartridges are available in different load strengths for the various slaughter animal species. When selecting cartridges, particular attention must be paid to the individual species and size of the individual slaughter animal. Selecting the proper cartridge strength in view of the individual slaughter animal ensures species-appropriate stunning and helps reduce wear-and-tear in the bolt spring and rubber buffer. The imprint, the color of the label and that of the primer cap indicate the cartridge's load strength.

Green:	Weak load For pigs and small animals (calves, sheep)
Yellow:	Middle load For cows, horses and lightweight oxen
Blue:	Heavy load For heavy oxen and bulls
Red:	Very heavy load For the heaviest animals

To ensure that the apparatus functions well, use the projectiles that we have tested and approved. Please place your order for drive cartridges with either your specialized dealer or with:

turbocut Jopp GmbH, Donsenhaus 4, D 97616 Bad Neustadt.

The cartridges must be stored in such a manner that they are safeguarded against unauthorized operation and use.

For further information, please visit our website www.schussapparate.de

4. Accessories and Wear Parts

Drive Cartridges

Art. Number	Description
72002	Green cartridges (weak load)
72001	Yellow cartridges (middle load)
72004	Blue cartridges (heavy load)
72003	Red cartridges (very heavy load)

Set

Art. Number	Description
80221	Striking pin complete
80228	Replacement set
80229	Trigger set
80230	Spring set
80231	Cleaning set

Individual Parts

Art. Number	Description
80140	Head piece nickled
80141	Intermediate piece
80157	Lock
80145	Head piece nut
80225	Bolts

5. Technical Data**Blitz Kerner**

Weight	2.25kg
Apparatus length	33 cm
Shaft diameter	40mm
Maximum fire rounds	17 shots/hour
Cartridges	9x17mm Centerfire
Power adjustment	4 Cartridge loads

Noise measurement procedure for fastener driving tools – Accuracy Class Procedures 2. German Version EN 12549:1999+A1:2008; red cartridge (460 mg propellant charge).

Acoustic pressure level on the measuring surface	98 dB(A)
Emission acoustic pressure level at the workplace	82 dB(A) max. 17
Shots/hour	
Acoustic capacity level	111dB(A)
Peak acoustic pressure level	139dB(C)

Vibration measurements with red cartridges (460mg propellant charge) in accordance with DIN EN ISO 5349-1, 20643 and DIN ISO/TS 15694 and 8662-11
The total vibration value does not exceed 2.5m/s² at 17 shots/hour.

6. General Safety Instructions

6.1 Fundamental Safety Precautions

Apart from the safety instructions detailed in the individual chapters of this Instruction Manual, you must invariably adhere to the following regulations.

6.2 Intended Use

The apparatus **exclusively** serves the purpose of stunning slaughter animals. Should the cartridge not be ignited, you must wait 30 seconds before unloading.

6.3 Inappropriate Use



The apparatus **may not be modified**.

You may only use original turbocut spare parts.

Exclusively use either original cartridges or those of equivalent quality.

Adhere to the stipulations detailed in the Instruction Manual in regard to operation, care and maintenance. Never aim the apparatus at yourself or other persons.

Do not press the apparatus against your hand or other body parts.

It is imperative that you avoid free shots.

6.4 Technological Status

The apparatus was designed and manufactured in accordance with the latest technology.

The apparatus could incorporate a risk of danger should it be used by untrained persons in an unauthorized or inappropriate manner.

6.5 Appropriate Operational Conditions and Use



Provide for good lighting.

The apparatus is exclusively intended for hand-operated use.

Ensure that you are properly positioned and always maintain your balance.

Avoid abnormal posture and bearing.

Ensure that other persons are not allowed to come within distance to the working area.

Ensure that the apparatus is kept dry, clean and free of oil and grease.

6.6 General Risks of Danger when Using the Apparatus



The apparatus may only be operated for its intended use when it is in perfect condition.

Never leave a loaded apparatus unattended.

Always unload the apparatus prior to cleaning, maintenance or storage.

Unused cartridges and apparatus that are not in use must be protected from moisture and excessive heat when stored.

The apparatus and cartridges must be stored in such a manner that they are safeguarded against unauthorized operation and use.

6.7 Hot Surface - Thermal Warning Sign



Do not exceed the stipulated maximum fire rounds (number of rounds shot per hour).

Do not dismantle the apparatus when it is hot.

6.8 Requirements Made on the User

The apparatus is only intended for use by professional users.

The apparatus may only be used and cleaned by authorized and trained personnel.

Always be fully concentrated when working. Be prudent and refrain from using the apparatus when you are not concentrated or distracted. Interrupt the work should you feel ill.

Closely observe the animal and be prepared for potential evasive movements.

6.9 Personal Protective Equipment



When the apparatus is being used, both the user and persons abiding in the vicinity must wear appropriated ear protection.

7. Initial Use

Inspecting the apparatus (prior to and following each usage).

Ensure that no cartridge is in the cartridge chamber.

Check the bolt's position. To do so, hold the apparatus at a vertical angle, pointing the muzzle downwards. The bolt must be located at least 4-5 mm within the shaft, and must independently remain there (-> refer to Troubleshooting).

Inspect the rubber buffer and bolt spring for wear-and-tear.

8. Using the Apparatus



Read Instruction Manual carefully before initial use.



Wear (users and persons in the vicinity) ear protection. Hearing can be damaged if the noise level is too high.
The bolt is accelerated by pulling the trigger.



Never aim the apparatus at yourself or other persons.

Be prepared for the animal's evasive movements.

8.1 Loading

For the following instructions, please refer to the diagram on Page 2.

Unscrew the head piece (80140), insert the cartridge (caliber 9x17 centerfire) into the intermediate piece (cartridge chamber 80141), ensuring that the primer cap upwards.

Using clockwise turns, securely fasten the head piece (80140). Make sure that the annular spring (86086) is still properly positioned. The annular spring's opening must be opposite to the trigger (80226).

8.2 How to Cock the Apparatus

Pull out the striking pin (80146) on the striking pin nut (80147) until the trigger audibly catches (80226). **The apparatus is now ready-for-use.**

While loading the apparatus with the cartridge and cocking the striking pin (80146), you must hold it in such a manner that it is not aimed at persons or your own body.



The striking pin (80146) may not be cocked until immediately prior to ignition.

The apparatus may not be held by its muzzle. Under no circumstances may the lower end of the apparatus (from which the bolt exits) be held against the body – not even when searching for possible malfunctions (-> refer to Troubleshooting).

Loaded apparatus must be unloaded unless they are to be immediately used.

8.3 Shooting

When preparing to shoot, the apparatus must be securely held in your guide hand and the lock (80142) positioned on the animal's skull. The shot is triggered by applying pressure to the trigger (80226) via your trigger finger– pull it completely through – the shot is triggered.

Diagrams 1- 6 on pages 12 and 13 depict the locations where the apparatus must be positioned on the individual animal species.

The apparatus is to be positioned on the weakest place of the skull, and held as vertically as is possible. It may not be tilted when the shot is fired, as the bolt (80225) could potentially get lodged in the skull bone and could thus not be drawn back via the bolt spring (86087).

It is imperative that free shots are avoided.



Only carry out trial shots against sufficiently hard and permanently mounted wooden base.

Should the ammunition fail, the igniting mechanism must again be triggered after approximately a half-minute. Should ignition again fail, unscrew the head piece (80140) and carefully remove the ammunition.



The striking pin bolt (80146) may not be cocked.



Inspecting the striking pin bolt (80146): When the head piece (80140) is unscrewed, it must be ensured that the striking pin bolt (80146) rod out of the head piece (80140), as this could otherwise result in premature ignition. If necessary, the striking pin spring (86085) and exterior striking pin spring (86086) must be replaced. Their replacement may only be performed using the entire Spring Set (80230).



Maintenance work may only be carried out by the manufacturer or their authorized staff, unless within the scope of his repair work, the user exclusively installs spare parts stipulated by the manufacturer (-> refer to Point 4, Accessories and Wear Parts).

8.4 Removing the Cartridge Case

After you have unscrewed the head piece (80140), remove the cartridge case with your fingers. Should the cartridge case be stuck, it can be removed using the extractor located at the end of the trigger (80226), by inserting it into the groove on the cartridge chamber (intermediate piece 80141).

The cartridge chamber must subsequently be immediately cleaned using the small brush.

Fig. 1

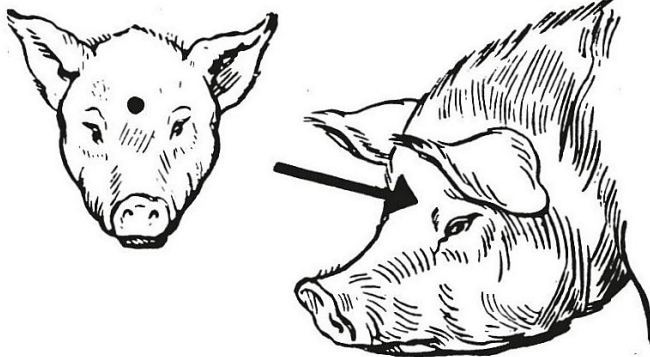


Fig. 2

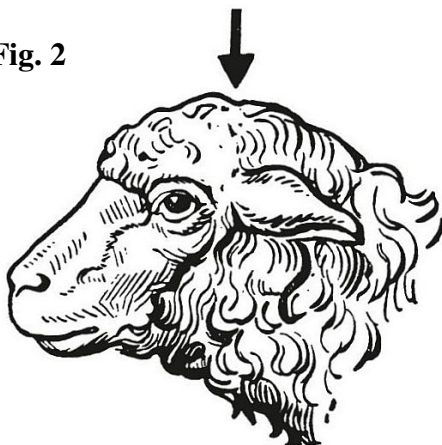


Fig. 3



Fig. 4

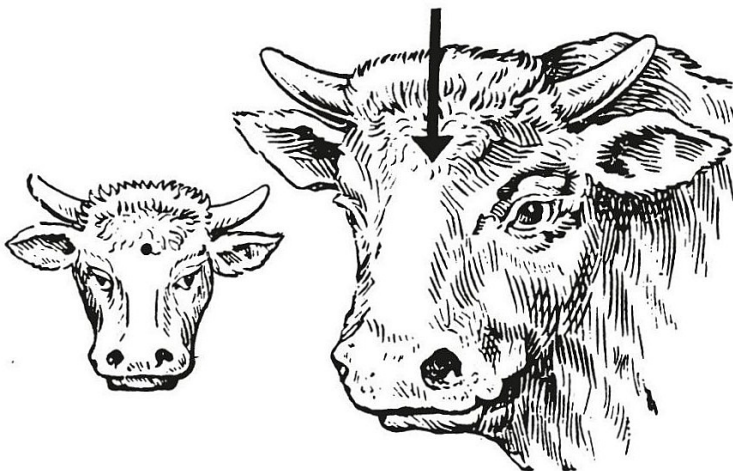


Fig. 1

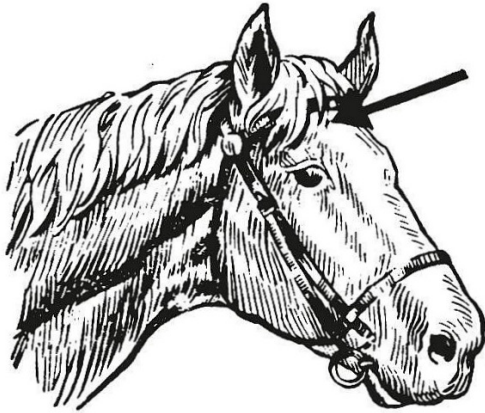


Fig. 6

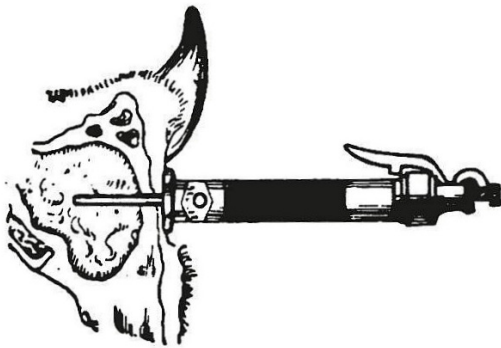


Fig. 6 shows the blot penetrating the brain

9. Care and Maintenance

After use, the apparatus must be carefully cleaned on a daily basis to avoid powder residues and rusting. Under certain circumstances, this could lead to malfunctioning and damage. When cleaning the apparatus, adhere to the respective Hazardous Substance Regulations in view of labeling and instructions pertaining to the agents used.

How to Proceed

Unload the apparatus and unscrew the head piece (80140).

Unscrew the lock (80157)

Remove the bolt spring (86087), rubber buffer (86088) and bolt (80225).

Using the brushes provided, which are screwed onto the cleaning rod, carefully clean the inner-shaft wall, the bolt (80225), the boreholes in the intermediate piece (cartridge chamber 80141), the apparatus' exterior, as well as the remaining components. If necessary, soften any rust and debris with an oil (e.g. Ballistol).

When the components are dry, lightly lubricate them using machine oil. Make sure that the rubber buffer (86088) is kept free of oil. Inspect the rubber buffer and bolt spring for cracks and lengths. Reinsert the bolt (80225), rubber buffer (86088) and spring bolt (86087) in this order, and screw on the lock (80157).

It is recommended that you do not dismantle the head piece (80140), but wash it out in oil (e.g. Ballistol) and subsequently lightly lubricate it.

You can check the proper functioning of the apparatus by inserting the cleaning rod provided (without the brushes), instead of a cartridge, into the intermediate piece (cartridge chamber 80141) and push out the bolt (80225) against the pressure of the spring (86087). The bolt (80225) must then visibly appear at the lower end of the apparatus, and when the pressure abates (via the cleaning rod), it must fully recede.

10. Troubleshooting

➤ **Cartridge does not ignite**

In this case, the striking pin bolt could be deformed or the striking pin bolt tip damage. The parts must be replaced.

Bolt movement could be hindered due to dirt. This necessitates cleaning.

However, the most common source of malfunction is to be found in the cartridge. Moisture can lead to a complete failure – or considerably reduced performance. Check the cartridge for rust; inspect the impact of the striking bolt pin tip on the primer cap. Use appropriate cartridges.

➤ **The bolt does not penetrate deeply enough**

Check whether the correct cartridge load strength has been selected, or whether the apparatus' interior is extremely dirty. Should the latter be the case, then clean it thoroughly. After removing the bolt spring and rubber buffer, you must be able to easily move the bolt back and forth.

Hold the apparatus at a vertical angle, pointing the muzzle downwards -> the bolt must independently be located at least 4-5 mm within the shaft. Should it move up to the muzzle's rim or already protrude, the rubber buffer and bolt spring must be immediately replaced (Replacement Set 80228).

Should the animal make an evasive move, or the apparatus has not been positioned on its head with enough force, this could result in a misfired shot.

➤ **The bolt does not recoil**

The stunning apparatus was tilted when fired so that the bolt is lodged in the skull.

The bolt spring and rubber buffer could be worn out. Replace both parts (Replacement Set 80228).

➤ **The bolt spring and rubber buffer wear out prematurely**

This is most often caused by using cartridges that are more powerful than stipulated. This can also occur when inappropriate ammunition is used.

➤ **The trigger can no longer be pulled**

Either the trigger mechanism is defective, or the trigger is deformed. Send the apparatus in for inspection without delay.

The annular spring is no longer properly positioned. The annular spring opening must always be located opposite to the trigger. Use a screwdriver to place the annular spring in this position.

11. Official Safety Regulations

When operating the stunning apparatus Blitz Kerner, you must without fail explicitly adhere to latest amended version of the Accident Prevention Regulation "Working with Stunning Apparatus" (BGV D 9 (Accident Prevention & Insurance Regulation D9)) of the Berufsgenossenschaft (Accident Prevention & Insurance Association).

The Blitz Kerner stunning apparatus may only be exclusively used to stun slaughter animals. It may only be used by persons who are familiar with its handling, how it is used and the Accident Prevention Regulations. Both the apparatus and the cartridges must be safeguarded against unauthorized operation.

The stunning apparatus may not be modified.

12. Inspection Specifications, Periodic Inspection

Within the scope of the Ordinance on Industrial Safety and Health, the user of a stunning apparatus must submit the apparatus to the manufacturer or their authorized representative for inspection every 2 years; or immediately in the case of significant malfunctioning. The term until the first periodic inspection commences upon delivery of the stunning apparatus to the user. The commencement of the term must be verified by a certificate (Certificate of Purchase), which either the manufacturer or dealer must enclose with the delivery of the stunning apparatus to the user.

13. Waste Disposal

The stunning apparatus Blitz Kerner, manufactured by turbocut Jopp GmbH, is produced using a high proportion of recyclable materials. The prerequisite to recycling is appropriate separation. If you wish to carry out separation, dismantle the apparatus insofar as it is possible without requiring any special tools.

Separating the individual parts

Component	Primary Material	Recycling
Rubber buffer	Elastomer	Household waste
Molded recess Trigger	Plastic	Plastics recycling
All other components	Steel	Scrap metal

14. Manufacturer's Warranty Blitz Kerner

The turbocut Jopp GmbH guarantees that the stunning apparatus is free of material and manufacturing defects. This warranty is valid under the prerequisite that the apparatus is properly used, handled, maintained and cleaned in compliance with the Blitz Kerner Instruction Manual. The technical unit must furthermore be preserved, i.e., only original consumables, accessories and spare parts or other products of equivalent quality may be used in the stunning apparatus.

The warranty covers free repair or free replacement of defect parts for the apparatus' entire life cycle. Parts that fall under normal wear-and-tear, such as rubber buffers and bolt springs are not covered by this warranty.

Further warranty claims are excluded insofar as there is no conflict with compulsory national regulations. Notably, turbocut Jopp GmbH shall not be held liable for direct or indirect damage, nor for consequential damage, loss or costs in connection with improper use of the stunning apparatus. Implied warranty of fitness or suitability for a particular purpose is explicitly excluded. No implied warranties of fitness for a particular purpose are made.

Immediately after determining the defect, the stunning apparatus and/or the relevant parts are to be sent to the manufacturer or their authorized representative for repair or replacement.

The presented warranty comprises all warranty obligations on the part of turbocut Jopp GmbH for the Blitz Kerner stunning apparatus, and replaces all previous or simultaneous statements, written or verbal agreements in regard to warranties.

CIP (Permanent International Commission for Firearms Testing) Test Certificate

The Blitz Kerner stunning apparatus manufactured by turbocut Jopp GmbH is type-approved and system-tested. On these grounds, the apparatus bears the PTB (Physikalisch-Technische-Bundesanstalt) quadratic type approval mark with the registered type approval number 3-69. turbocut Jopp thus guarantees that each stunning apparatus conforms to the approved type.

Inadmissible defects that are determined during usage must be reported to the responsible director of the approval authorities (PTB), as well as the office of the Permanent International Commission for Firearms Testing (C.I.P.).

15. EC Declaration of Conformity

Description	Stunning Apparatus
Model	Blitz
Year of Construction	1990

We hereby declare under our sole responsibility that this product complies with the stipulations of the EC Directive 2006/42/EG of the European Parliament and Council from May 17, 2006, governing machines (Machinery Directive).



Signature Dr. Büchs
Managing Director

Manufacturer

turbocut Jopp GmbH

Donsenhaug 4
D 97616 Bad Neustadt

Telephone: +49 (0)9771 9105 366
Telefax: +49 (0)9771 9105 368
Internet: www.schussapparate.de
E-mail: info@turbocut.de

Stunning Apparatus Blitz Kerner

Caliber 9 x 17mm

PTB No. 3-69

Important Notes on the Certificate of Purchase

In accordance with §24 of the "Allgemeinen Beschussgesetz Verordnung" (General Ordinance on the Weapons Act), the user of a stunning apparatus must present the device to either the manufacturer or their authorized representative every 2 years for inspection, and immediately in the case of significant malfunction.

The term until the first periodic inspection commences upon delivery of the stunning apparatus to the user. The commencement of the term must be verified by a Certificate of Purchase (refer to the reverse side), which either the manufacturer or dealer must enclose with the delivery of the stunning apparatus to the user.

Whoever deliberately or carelessly does not present the stunning apparatus for inspection on time, shall be deemed to have committed an administrative offense (refer to §42 No. 6 of the "Beschussverordnung" (General Ordinance on the Weapons Act) and runs the risk of being faced with an administrative penalty.

In order that you do not miss the first periodic inspection, we recommend that you attentively file this certificate together with your fixed-date documents.

It is imperative that the Instruction Manual be adhered to and that it be kept together with the stunning apparatus for its entire service life.

The apparatus may not be modified.

Never aim the apparatus at yourself or other persons.

The cartridges must be stored in such a manner that they are safeguarded against unauthorized operation and use.

turbocut Jopp GmbH
Donsenhaug 4
D 97616 Bad Neustadt

Telephone: +49 (0)9771 9105 366
Telefax: +49 (0)9771 9105 368
Internet: www.schussapparate.de
E-mail: info@turbocut.de

CERTIFICATE OF PURCHASE

for proof of the commencement of the term for the periodic inspection in accordance with § 24 of the allgemeinen Beschussgesetz Verordnung (General Ordinance on the Weapons Act) .

The turbocut Jopp cattle stunning apparatus Blitz Kerner

Apparatus Serial nr. _____

was sold (date) _____

by Company (name) _____

to (name) _____

document/invoice _____

delivered _____

Date of Periodic Inspection

Company, date, signature